

Bow Street Police Museum Visual Story



BOW STREET **POLICE MUSEUM**

Visual Story

Contents

Welcome to Bow Street Police Museum!.....	2
Sensory Map	3
Reception Area	4
Museum Staff.....	5
Gift Shop.....	6
Toilets.....	7
Exhibition Space	8
The Cell Corridor.....	9
The Cells.....	10
“The Tank”	11
In Case of Emergency.....	12



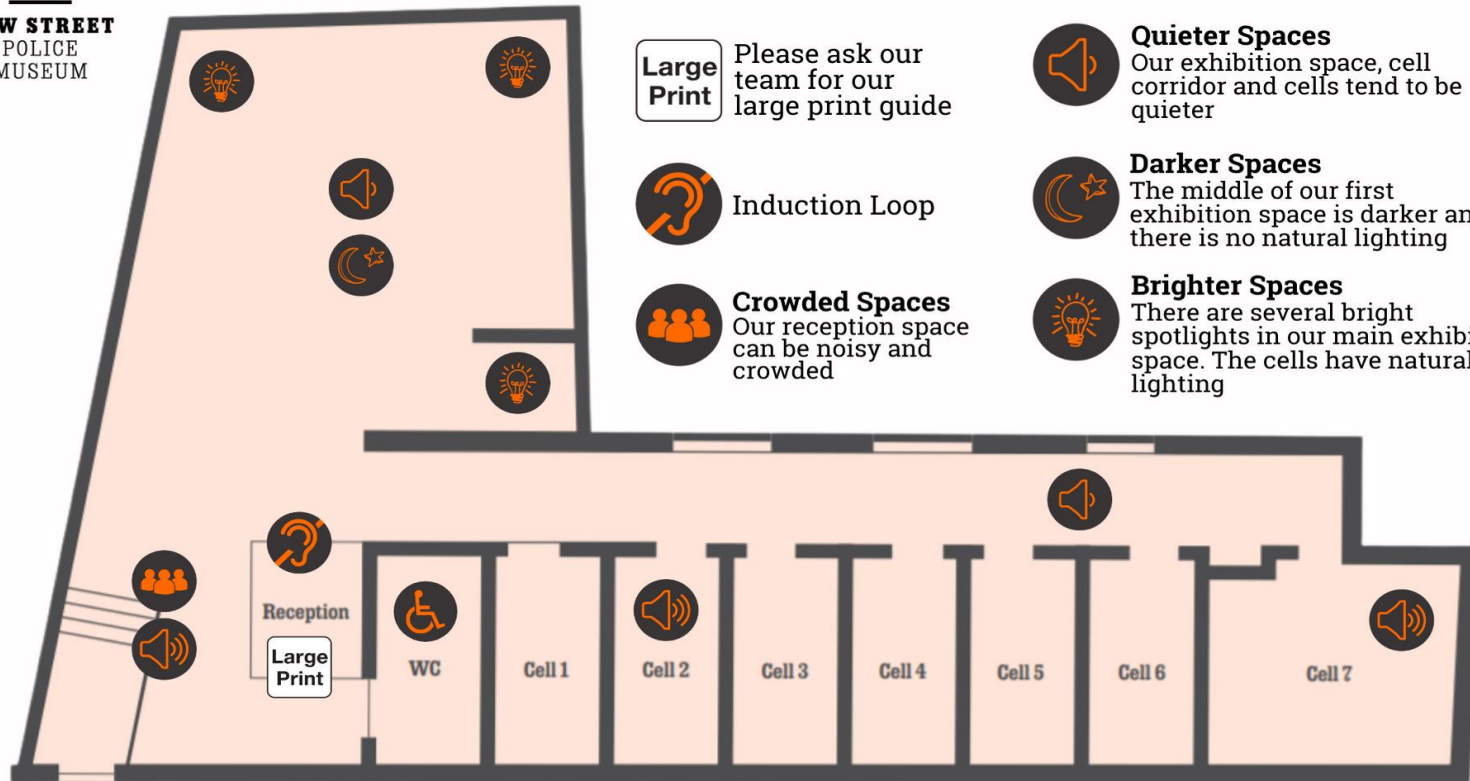
Welcome to Bow Street Police Museum!

Our main entrance is located under a police lamp on Martlett Court. There are five steps up to our reception area at this entrance. We have step-free access to the Museum through the entrance to the NoMad London Hotel on Bow Street. The staff at the Hotel will be happy to help you.

The Museum is open from 11:00 - 16:30 Friday to Sunday. The last entry is at 16:00. Covent Garden is quite a bustling area and Bow Street may be busy and noisy especially at the weekends. Martlett Court should not be too busy. The Museum itself is quite small and entry is timed, there are several thirty-minute spots throughout the day.



Sensory Map



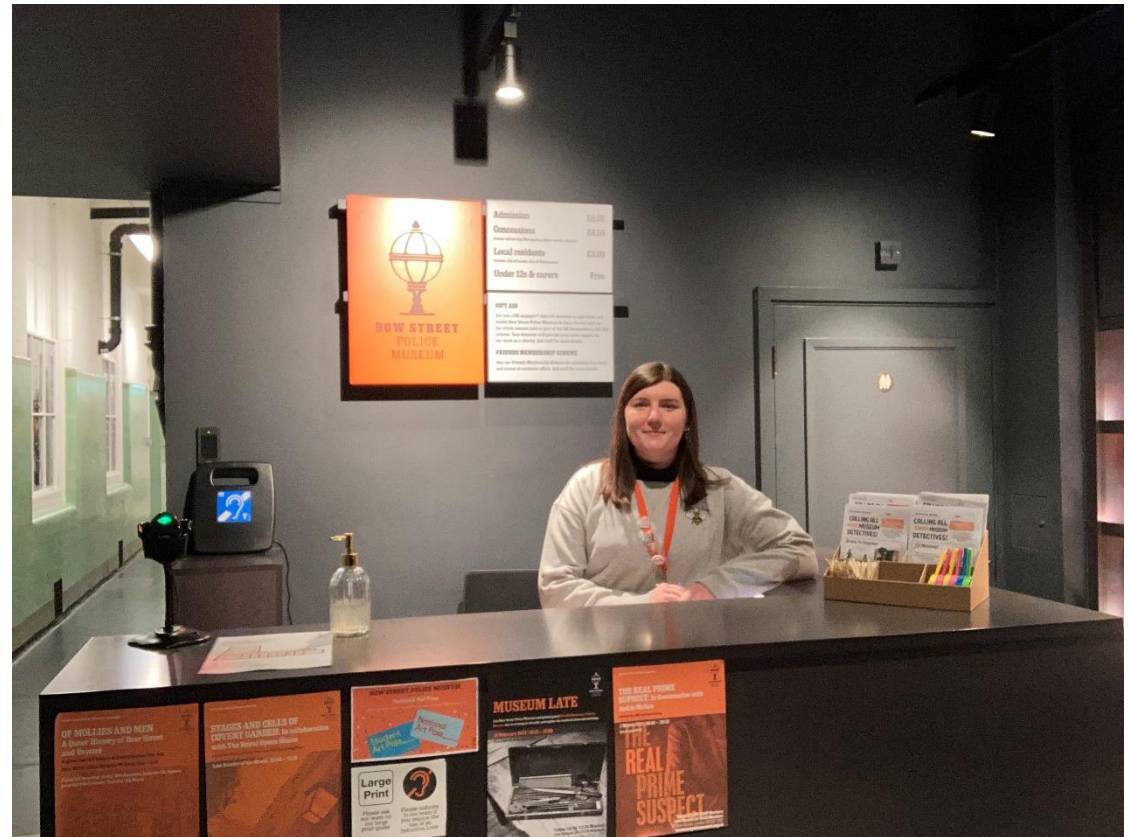
If you have any questions or require any adjustments ahead of your visit please let a member of our team know by emailing us at info@bowstreetpolicemuseum.org.uk to discuss further

Reception Area

When you enter up the stairs, you will see the Reception area directly to your right. This is where you will buy your ticket or check in with staff if you have already purchased your ticket online.

Beside the reception desk is the gift shop, where you can purchase Bow Street Police Museum merchandise if you would like at any time during your visit.

This area may get a little busy with people queueing to get into the museum or wanting to buy things. But there are no loud noises or tannoys in this area.



Museum Staff

The museum staff will have transcripts and helpful information for you if you need it, please feel free to ask us. We also have fold up chairs for you to take on your journey through the museum. You will meet our museum team at reception. They are very friendly and you can ask them any questions about London or the Museum. The team is made up of three people: Vicki, Ciara and Alan. Our staff all speak English and some BSL. We are happy to communicate with you in whatever way you feel comfortable.



Vicki – Museum Manager



Ciara – Museum Coordinator



Alan – Museum Coordinator

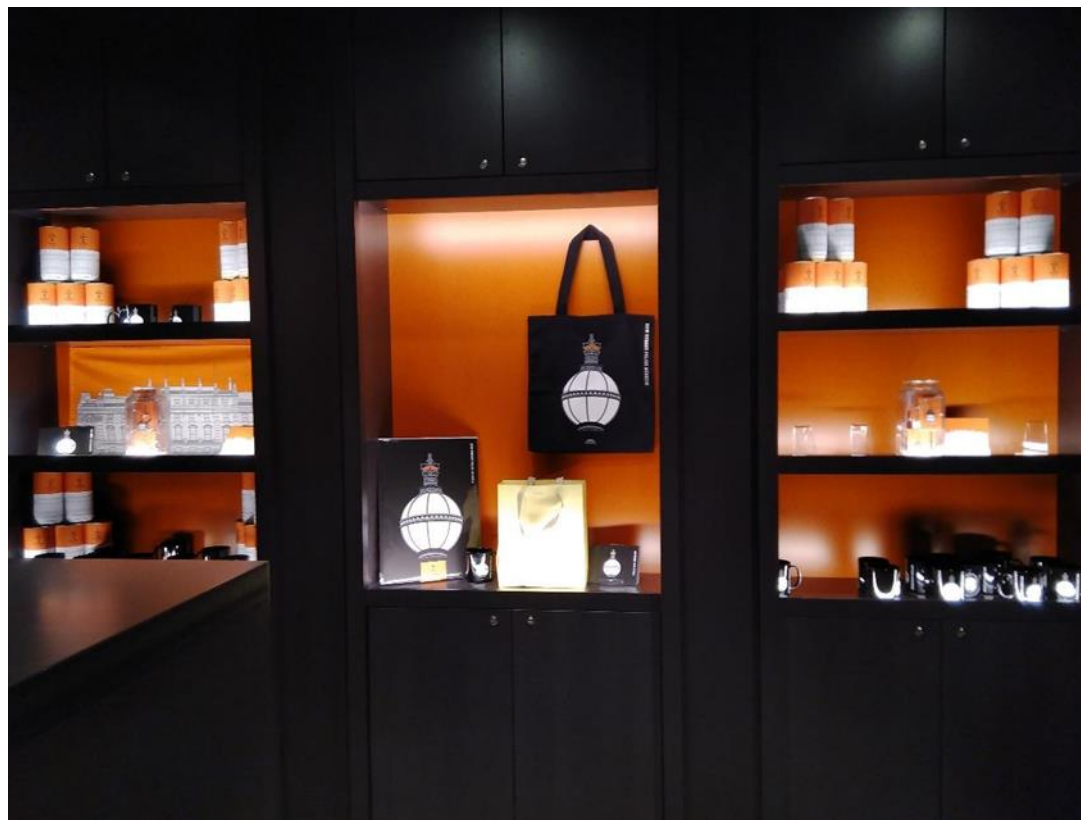
Gift Shop

The Museum Gift Shop is located on the right hand side of the Reception Desk. There are three alcoves, two have shelves on them.

We have mugs, tote bags, postcards, keyrings, badges, tea, biscuits, tea towels and t-shirts for sale.

We also have lots of books.

You can ask our staff for help if you need. If you would like to buy anything, you can do so at the reception desk where you picked up your ticket.



Toilets

There is one toilet in the museum located to the right of the reception desk.

It is for unisex use, and it is wheelchair accessible.

There is an alarm you can pull on a red string if you need emergency assistance from staff while you are using the toilet facilities.



Exhibition Space

After checking in at the desk, you can start exploring the museum. There is a wide open space with different panels on the walls. There are two glass cases with objects in them. There is also the original dock from when this building was a courthouse.

It is recommended to work clockwise around this space and read the panels. When you are finished in this space, you can go down the corridor to the cells, where there are more information panels and objects to see.



The Cell Corridor

To the left of the reception desk is a corridor with several cells. These are original to the building from when it was a Police Station.

There are seven cells that are a part of the museum. The doors are all open, we do not close them and they do not lock.

The first cell is a recreation of what it would have been like to stay in. There is a barrier blocking the entrance and you can look inside but please do not enter.



The Cells

Each cell entry way is about 73cm wide. The cells are small but not too narrow. Each cell is about 3.3m long and 1.1m wide at the narrowest point from the bench to the wall. There is lots of room for a few people to stand in and see the exhibitions. If you are not comfortable entering the cells, the museum staff have transcripts of the wall panels for you to read.

There is a video and an audio recording playing in the second cell. This is the only cell with this. It is not very loud, but if you do not wish to enter or watch the film, a member of staff can provide you with the transcript to read.

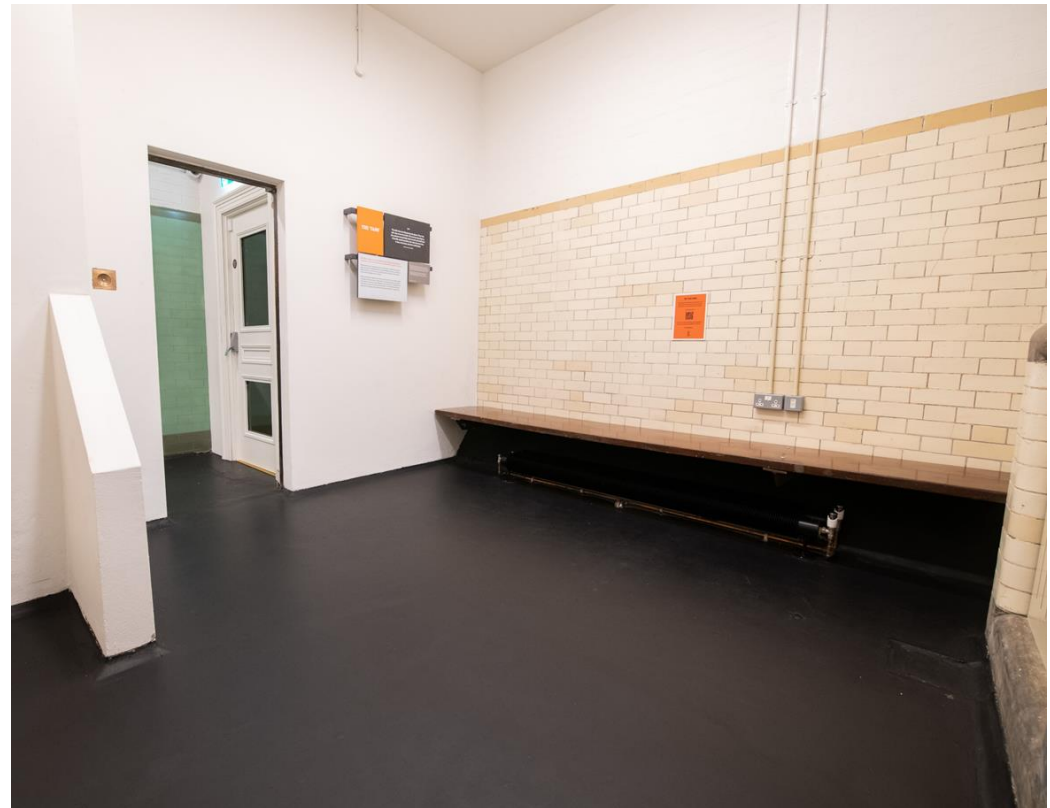
In each cell there is one of the original benches that you can sit down on. There is also a toilet which is covered with a hard plastic cover. This is not a functional toilet. At the end of the corridor of cells, there is a sink. This is not a functioning sink.



“The Tank”

Also known as “The Drunk Tank”, this is the final cell in the corridor. It is much larger than the others and can hold multiple people very easily. It has a high ceiling and there is an echo in it. Some visitors might find the acoustics of the drunk tank a bit confusing or uncomfortable. There is only one panel in the drunk tank and there is a QR code to listen to audio files. You can ask the staff for a transcript of the panel or audio if you do not want to enter.

At the end of the corridor is an emergency exit. Please do not enter unless you are instructed by staff to exit through here. The next page will tell you what to do if there is an emergency.



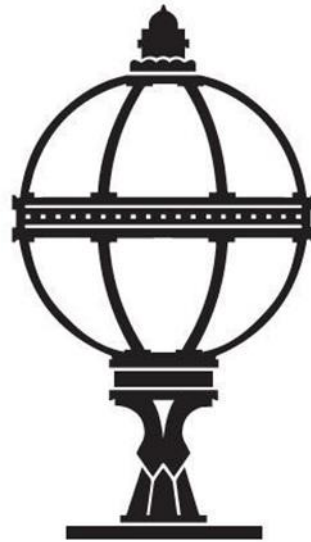
In Case of Emergency

There are three ways to exit the building in the case of emergency. The first is via the entrance that you came in. The second is the double doors in the main exhibition space, but this leads through the Hotel and not to the street. The third is at the end of the cell corridor which leads to the back of the building.

In the event of an emergency, the staff will be calmly guiding visitors out of the building to the assembly area. The assembly area is outside the main entrance, and to the left on Martlett Court. The staff will be there at all times to guide and assist you if needed.

Please wait for staff to tick you off the guest list at the assembly area so that we know you are safe.





BOW STREET
POLICE
MUSEUM

We hope you have a great visit with us and we look forward to seeing you soon!

If you have any further questions please email us at info@bowstreetpolicemuseum.org.uk or phone 020 3967 4294.